



condensing unit

Technical Catalog

**Industrial
ICU-IM/IL**



industrial CONDENSING UNIT

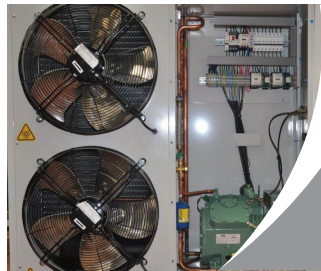
industrial type split



ICU-HM/HL

Hermetic Split System for small and medium size cold rooms, low noise condensing unit and evaporator with accessories installed, supplied without piping. Thermostatic expansion valve, remote control panel. Suitable for outdoor use.

Cooling Capacity:
MT = from 1103 W to 13100 W (-5 °C / +45 °C)
LT = from 753 W to 3550 W (-30 °C / +45 °C)



ICU-SM/SL

Semi-Hermetic Split System for small and medium size cold rooms, low noise condensing unit and evaporator with accessories installed, supplied without piping. Thermostatic expansion valve, remote control panel. Suitable for outdoor use.

Cooling Capacity:
MT = from 1960 W to 35530 W (-5 °C / +45 °C)
LT = from 840 W to 17995 W (-30 °C / +45 °C)



ICU-CM/CL

Scroll Split System for small and medium size cold rooms, low noise condensing unit and evaporator with accessories installed, supplied without piping. Thermostatic expansion valve, remote control panel. Suitable for outdoor use.

Cooling Capacity:
MT = from 4040 W to 26300 W (-5 °C / +45 °C)
LT = from 2250 W to 12200 W (-30 °C / +45 °C)



ICU-TS

Shock Cooling Split System for small and medium size cold rooms, low noise condensing unit and evaporator with accessories installed, supplied without piping. Thermostatic expansion valve, remote control panel. Suitable for outdoor use.

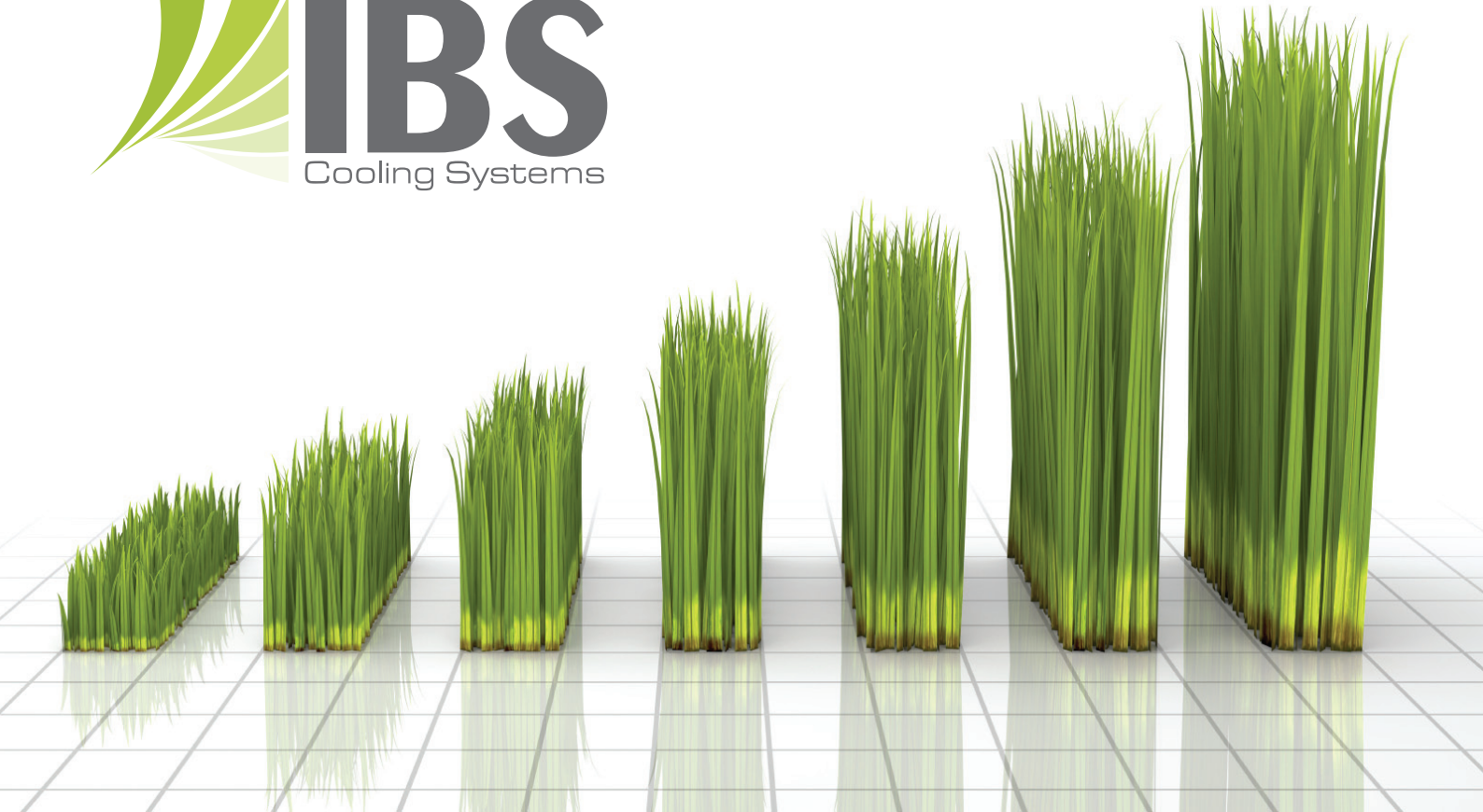
Cooling Capacity:
LT = from 5970 W to 29500 W (-35 °C / +45 °C)



ICU-IM/IL

Industrial Split System for small and medium size cold rooms, low noise condensing unit and evaporator with accessories installed, supplied without piping. Thermostatic expansion valve, remote control panel. Suitable for outdoor use.

Cooling Capacity:
MT = from 42950 W to 105560 W (-5 °C / +45 °C)
LT = from 20090 W to 31950 W (-30 °C / +45 °C)



About IBS

IBS likes to describe itself as a business based on a distinct work ethic, love of innovation, the will to invest, and above all on an unrivaled respect for its customers and their satisfaction. These business characteristics are also shared by the companies that work with IBS, in a technical-economic network that generates products and services in the commercial refrigeration sector. The remarkable growth of IBS's supply companies, from components to service providers, should be considered the most positive and stabilizing aspect of the modern development of IBS.

IBS is the leading company in cooling and servicing in Turkey.

We produce everykind of cooling equipments in a variety of system solutions and scale in many countries in Europe.

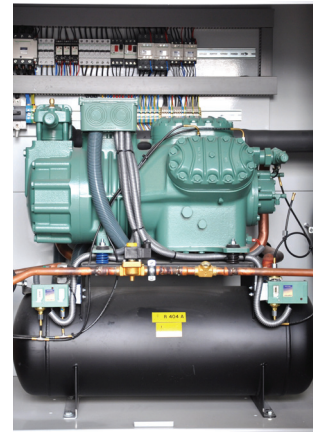
IBS with the brand name IBS is produced by the largest producer of this type of cooling systems in Turkey. The company has all their departments (development production administration etc.) beneath one roof and they meet the ISO 9001 -2000 standards.

We also develop special systems for special projects from heatrecovery upto automisation and temporization of any kind of product.

Products

We care for our customers for equipment ergonomy and for our inviorment. The future is energy and according to that point we use energy very efficient.

Our solutions includes Central Refrigeration Systems, Split Type Condensing Unit, Air Cooler, Turnkey Projects, Automation, Special Projects, 7/24 Service.



industrial semi-hermetic

Advantages

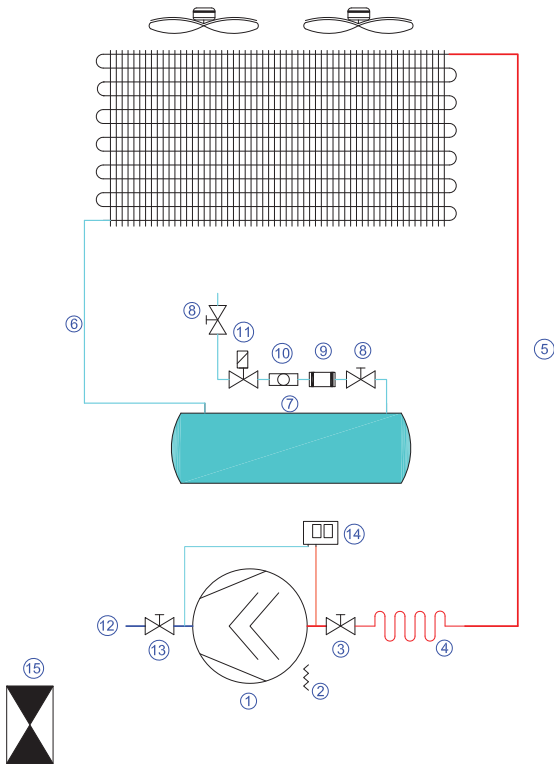
- Appropriate to standards
- High efficiency
- High quality components
- Full cabinet unit for outside applications
- Easy assembling and mounting
- Designed for easy maintenance and mounting
- Floor or wall mount opportunities
- Wide product range
- Complete, ready to install unit
- Special models/designs are also available

Technical specifications

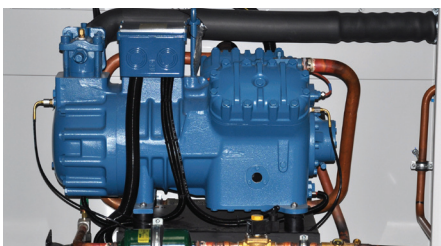
- Electrostatic painted, steel galvanized unit
- Voltage protection relay
- Magneto-thermal switch on three phase models
- Contactor on all model range
- Crankcase heater
- Cu/Al Condenser
- Electronic fan speed control
- Liquid receiver
- Drier filter
- Gas flow gauge with humidity indicator
- Service/maintenance valve on liquid line
- LP/HP combined pressure on-off
- Integrated electric box
- Pressure relay valve
- Acoustic insulation
- Electric isolator
- Specially designed mounting brackets

Optional

- Electronic fan speed control
- Soundproofing kit
- Suction Line Accumulators
- Muffler
- Oil Separator



- | | |
|--------------------------------------|------------------------|
| 1. Compressor | 9. Filter |
| 2. Crankcase Heater | 10. Gas Flow Gauge |
| 3. Discharge Line Service Valve | 11. Solenoid Valve |
| 4. Discharge Line Vibration Absorber | 12. Suction Line |
| 5. Discharge Line | 13. Section Line Valve |
| 6. Condenser Return Line | 14. Pressure Control |
| 7. Liquid Tank | 15. Electrical Box |
| 8. Liquid Line Service Valve | |



ICU-IM Technical Specifications

Model (With Condanser)	Compressor Model	Cooling Capacity W						Current Max. A	Electrical Power kW (-10°C) 400 V / 3 / 50Hz	Sound Power dB	Condanser		Connection Suction line Discharge Line	Weight Kg	Cabin Type
		-5/+45	-5/+50	-10/+45	-10/+50	-15/+45	-15/+50				m ²	Fan			
FRASCOLD / Semi-Hermetic Compressor / High Speed Fan															
ICU-SM 71.Z.F-4	V 25 71	42950	38540	34820	31160	27840	24810	57,0	18,92	53	2x116	4x500	2"1/8	600	E 4
ICU-SM 84.Z.F-4	V 30 84	51690	46490	42170	37830	33950	30380	62,7	22,04	53	2x145	4x500	2"1/8	600	E 4
ICU-SM 93.Z.F-4	V 32 93	55920	50090	45110	40270	35810	31850	66,6	23,42	53	2x174	4x500	2"1/8	600	E 4
ICU-SM 106.Z.F-4	Z 35 106	65460	58650	53290	47670	42880	38310	80,4	29,71	55	2x174	6x500	2"1/8	840	E 6
ICU-SM 126.Z.F-4	Z 40 126	76480	68350	62140	55400	49830	44350	92,1	31,60	55	2x218	6x500	2"5/8	840	E 6
ICU-SM 154.Z.F-4	Z 50 154	93600	84190	76150	68330	61060	54600	117,3	39,96	56	2x222	8x500	2"5/8	950	E 8
ICU-SM 168.Z.F-4	W 50 168	105560	94660	86160	77170	69420	62110	128,4	44,44	57	2x285	10x500	2"5/8	1090	E 10
BITZER / Semi-Hermetic Compressor / High Speed Fan															
ICU-SM 63.Z.B-4	4J-22.2	39100	35500	32100	29100	26075	23600	52,5	17,43	53	2 x 87	4x500	1"3/8	600	E 4
ICU-SM 74.Z.B-4	4H-25.2	45400	41250	37325	33850	30325	27450	58,5	19,87	53	2 x 116	4x500	1"3/8	600	E 4
ICU-SM 84.Z.B-4	4G-30.2	52175	47450	42950	39000	34925	31650	66,5	22,74	53	2 x 145	4x500	1"5/8	600	E 4
ICU-SM 95.Z.B-4	6J-33.2	58700	53300	48200	43700	39150	35400	73,5	23,96	53	2 x 174	4x500	1"5/8	600	E 4
ICU-SM 110.Z.B-4	6H-35.2	68150	61900	56000	50800	45525	41200	81,2	29,94	55	2 x 174	6x500	2"1/8	840	E 6
ICU-SM 126.Z.B-4	6G-40.2	78300	71200	64450	58500	52450	47500	98,2	34,14	55	2x218	6x500	2"1/8	840	E 6
ICU-SM 151.Z.B-4	6F-50.2	93500	84900	76850	69700	62500	56600	118,9	41,92	56	2x222	8x500	2"1/8	950	E 8

Model Designation

ICU	S	M	93	Z	F	4
1	2	3	4	5	6	7

1 Production Serie

2 Compressor Make Model
H: Hermetic **C:** Scroll **S:** Semi-Hermetic

3 Application Temperature
M: -5/+5 °C **L:** -15 / -25 °C

4 Total Displacement

5 Refrigerant
E: R 22 **Z:** R 404 A **Y:** R 134 A

6 Compressor Make
B: Bitzer **F:** Frascold **T:** Tecumseh **C:** Copeland **BS:** Bristol **S:** Sanyo

7 Fan Speed
4: 1400 d/d **6:** 900 d/d **8:** 660 d/d **12:** 330 d/d

ICU-IL Technical Specifications

Model (With Condenser)	Compressor Model	Cooling Capacity W						Current Max. A	Electrical Power kW (-30°C) 400 V / 3 / 50Hz	Sound Power dB	Condenser		Connection Suction line Discharge Line	Weight Kg	Cabin Type
		-25/+45	-25/+50	-30/+45	-30/+50	-35/+45	-35/+50				m ²	Fan			
FRASCOLD / Semi-Hermetic Compressor / High Speed Fan															
ICU-SL 106.Z-F-4	Z 25 106	26600	23570	20090	17730	14670	12870	60,00	18,21	53	2x116	4x500	2"1/8	600	E4
ICU-SL 126.Z-F-4	Z 30 126	30860	27280	23470	20660	17270	15100	63,98	19,96	53	2x145	4x500	2"1/8	600	E4
ICU-SL 154.Z-F-4	Z 40 154	41110	36840	31740	28200	23760	20810	90,37	26,89	55	2x174	6x500	2"5/8	840	E 6
BITZER / Semi-Hermetic Compressor / High Speed Fan															
ICU-SL 95.Z-B-4	6I-22.2	25700	23000	19855	17610	14850	13010	40,7	16,57	53	2x116	4x500	2"1/8	600	E 4
ICU-SL 110.Z-B-4	6H-25.2	30025	26900	23275	20700	17510	15400	47,5	19,12	53	2x141	4x500	2"1/8	600	E 4
ICU-SL 126.Z-B-4	6G-30.2	34725	31150	26975	24050	20395	17990	54,3	21,28	53	174x2	4x500	2"1/8	600	E 4
ICU-SM 151.Z-B-4	6F-40.2	41225	36950	31950	28400	24025	21150	66,4	25,84	55	174x2	6x500	2"1/8	840	E 6

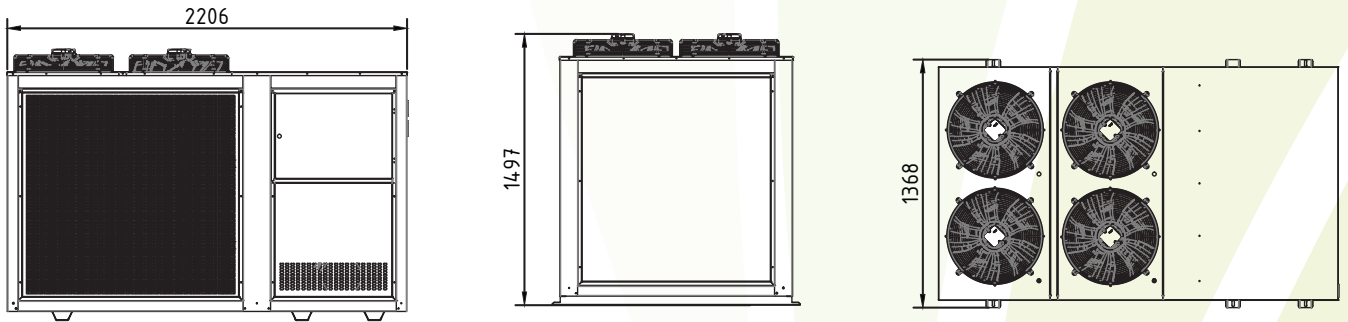
Model Designation

ICU	S	L	39	Z	F	4
1	2	3	4	5	6	7

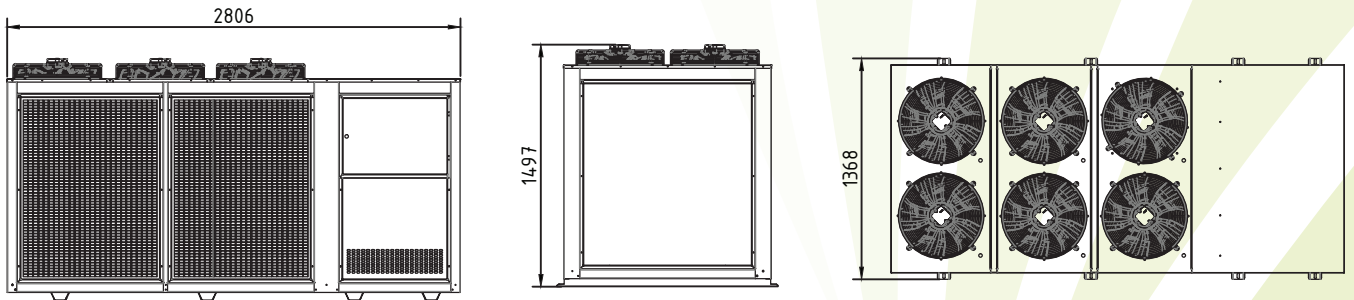
- 1** Production Serie
- 2** Compressor Make Model
H: Hermetic **C:** Scroll **S:** Semi-Hermetic
- 3** Application Temperature
M: -5/+5 °C **L:** -15 / -25 °C
- 4** Total Displacement

- 5** Refrigerant
E: R 22 **Z:** R 404 A **Y:** R 134 A
- 6** Compressor Make
B: Bitzer **F:** Frascold **T:** Tecumseh **C:** Copeland **BS:** Bristol **S:** Sanyo
- 7** Fan Speed
4: 1400 d/d **6:** 900 d/d **8:** 660 d/d **12:** 330 d/d

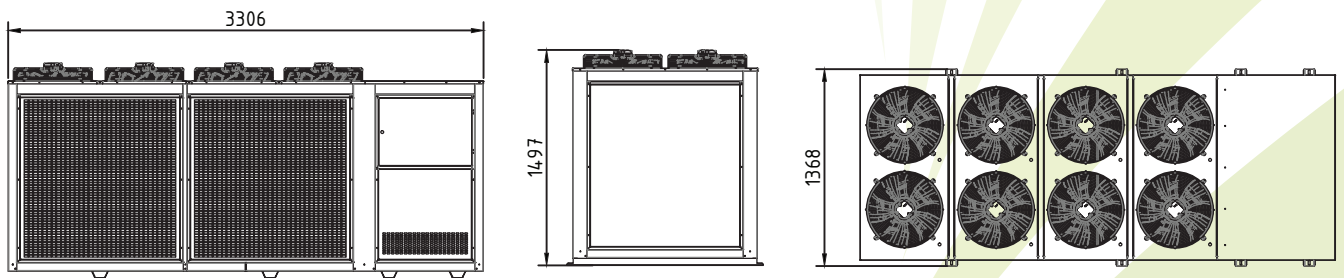
E4



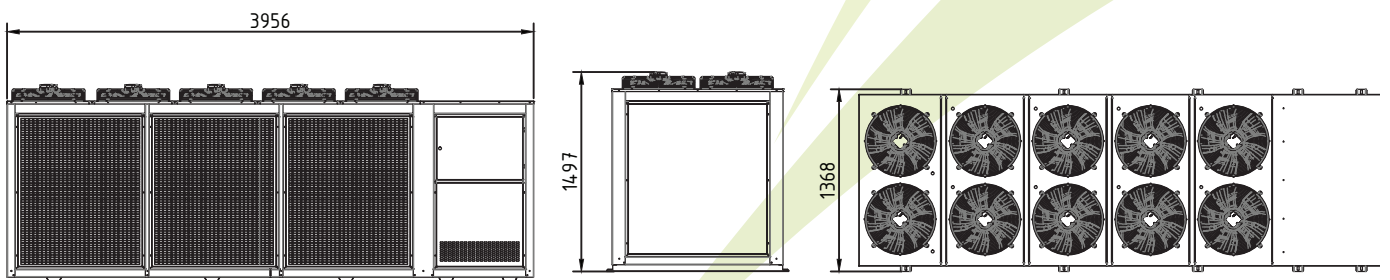
E6

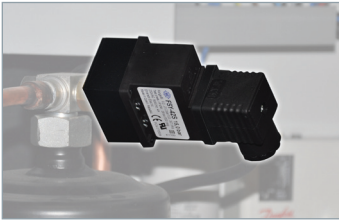


E8



E10





Fan Speed Control



Combine Pressure Control



Safety Switch



Liquid Indicators Unit



Solenoid Valves



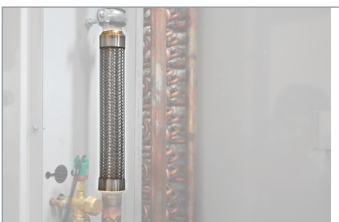
Fan



Pressure Manometer



Helical Oil Separators



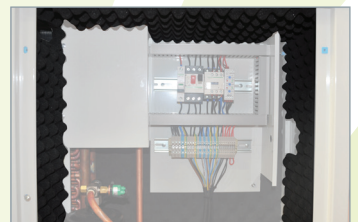
Vibration Eliminators



Vertical Liquid Receivers



Easy to Carry



Acoustic Insulation



Connection



Electrical Board



Efficient use of Condanser



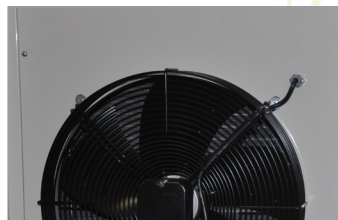
Suction Line Accumulators



Easy Installation Equipment



Sound Jacket



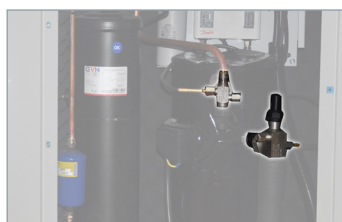
Cabinet Unit for Outside Applications



Filter Driers



Selenoid Valves



Rotolock Valves



Subcooling



Pressure Switch



IBS Isıtma Soğutma Havalandırma Taah. San. ve Tic. Ltd. Şti.

Dudullu Organize Sanayi Bölgesi 2.Cadde No:39 34776 Y. Dudullu - İstanbul

Tel: +90 (216) 466 04 05 - 06 Fax: +90 (216) 466 05 70

info@ibs.info.tr www.ibs.info.tr



Registered ISO 9001:2000

